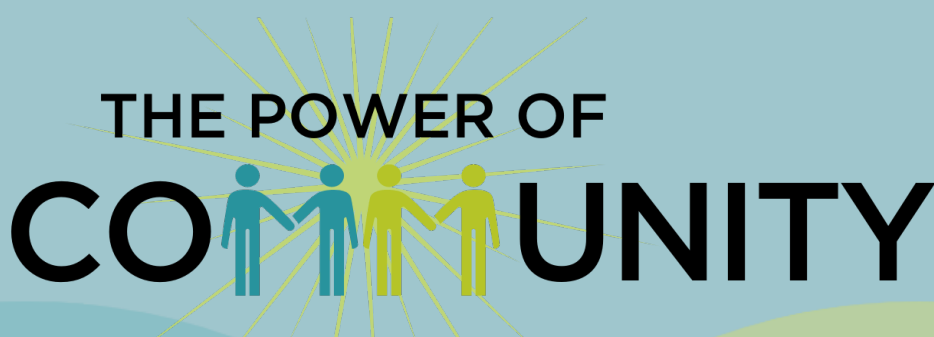




COMMUNITY GIVING



ANNUAL REPORT
JULY 1, 2022 – JUNE 30, 2023

Dear Friends,

As we reflect on the remarkable year gone by, we are compelled to express our heartfelt gratitude to the many donors and nonprofits we serve for your unwavering commitment to the

Power of Community.

As the CEO and Board Chair of CommunityGiving, we are honored to share

the highlights of the impact we've witnessed in **Fiscal Year 2022-23.**

This year has exemplified the extraordinary strength that emerges when individuals join hands with a common purpose. Together, we have witnessed the Power of Community in action—fostering resilience, inspiring change, and uplifting lives. Your dedication has fueled our organization's mission to **empower, enrich, and engage**, creating a ripple effect that reaches every corner of the communities we serve.

Our Annual Report encapsulates a myriad of **stories of triumph and progress** made possible through the generosity of our donors. From supporting local initiatives to empowering grassroots movements, their contributions have been the driving force behind the positive change we've achieved together. We celebrate not only the donations raised but also the **relationships built**, the lives touched, and the communities strengthened.

As we navigate the challenges and opportunities ahead, we remain united in our pursuit of a brighter future. The Power of Community is not merely a theme; it is a guiding principle that propels us forward. Thank you for being an imperative part of this collective journey toward positive change and a brighter future for all.



Steve Peterson and Steve Joul

Board Chair and President & CEO

OUR YEAR AT A GLANCE



COMMUNITY
GIVING



\$17.5M
GRANT DOLLARS
DISTRIBUTED



\$210.1M
TOTAL ASSETS

90.3%
OF ALL GRANTS
AWARDED STAY IN MN

*This information includes data as of June 2023 from community grant rounds and community funders.

BETTER TOGETHER

CommunityGiving’s mission is to strengthen local communities by empowering community foundations. By sharing resources, each local foundation is able to operate more efficiently and focus on local philanthropy, needs, and, donors all while elevating credibility.

BENEFITS OF BEING A PARTNER OF COMMUNITYGIVING:

- ▶ Shared education and understanding of community foundations and their potential to impact local communities.
- ▶ Shared marketing, technology, human resources, and financial services including shared investment pools and investment oversight.
- ▶ Support of thirty-three team members to assist donors, nonprofits, and professional advisors as they make charitable gifts, receive grants, and help their clients with philanthropic goals.



“Our community foundations assist donors and fund holders with tackling our communities’ toughest problems by finding and being a part of the solution. Being a part of the CommunityGiving network allows us to be hyperlocal, focused and access resources that result in an even greater impact being made through philanthropy in Alexandria.” – Jack Driscoll, Board Chair of the Alexandria Area Community Foundation

OUR PARTNER COMMUNITIES



COMMUNITY IMPACT

Our partner foundations are dedicated to supporting local nonprofits and their programming through competitive grant rounds and by connecting donor resources to community needs. These organizations work tirelessly and passionately to make a positive impact in our communities. Donors and fundholders can amplify the impact that their local community foundation has on these programs by contributing to general funds. This allows our partner foundations to provide even greater financial assistance to these programs, ultimately enhancing the impact of critical community issues.



“The R.O.S.E. Center handicap-accessible vans are a blessing to the Paynesville community by providing transportation to those who use wheelchairs and need transportation to get to local and out of town appointments, family gatherings, and other needs. A big thank you to the volunteer drivers, the R.O.S.E. Center staff, and the Paynesville Area Community Foundation for helping provide the vans for people in need.” – Peter and Lynn Jacobsen, Van Service User

The Paynesville Area Community Foundation (PACF) was able to support the Paynesville R.O.S.E. Center with \$20,000 through their annual grant round. The Paynesville R.O.S.E. Center transportation program serves hundreds of seniors and disabled residents in the Paynesville area. In the past year, 86 volunteers provided over 6,000 hours of volunteer service to assist residents with their transportation needs. Forty volunteer drivers drove over 70,000 miles this past year to provide transportation services for people with various transportation needs. The increasing number of requests for accessible transportation in the community requires a second van to meet the demand for their services. The grant from the PACF will be used towards a second handicap-accessible van that will be available to area residents.

#

\$879K

TOTAL NUMBER OF GRANT
DOLLARS AWARDED THROUGH
COMPETITIVE GRANT ROUNDS



19

TOTAL NUMBER OF
ANNUAL GRANT ROUNDS



100

TOTAL NUMBER OF
NONPROFITS/PROGRAMS
AWARDED FUNDING



For more information about our competitive grant rounds including eligibility, open dates, focus areas and more, visit communitygiving.org/grants or scan the QR code.



1,105
TOTAL FUNDS
IN 2022 - 2023



102
NEW FUNDS
IN 2022 - 2023

CENTRAL MINNESOTA - ESTABLISHING A FUND TO CREATE LOCAL IMPACT

TOM AND JANET GRONES



“In a very real sense, the community had a heart and reached out to us,” Tom said remembering the couple’s humble beginnings. Their fund at the Foundation was a way for them to return the favor. “It is part of what you do,” Tom said. “You give back to the broader community.”

View Tom and Janet’s
full story online by
scanning the QR code or
visiting our website at



communitygiving.org/legacy-story/tom-and-janet-grones

TYPES OF FUNDS YOU CAN OPEN



DONOR ADVISED FUNDS

Most popular type of fund. Often thought of as a “charitable checking account.” Donor advised funds allow individuals & families to directly impact their favorite nonprofits & programs by making gifts from their fund.



CORPORATE ADVISED FUNDS

Established by companies to be used as a tool to fulfill their corporate giving goals. Reduces overhead on accounting and tax reporting on their charitable giving as it streamlines the process.



FIELD OF INTEREST FUNDS

Allows donors to create a fund for a specified broad purpose such as youth, education, animals, etc. Donors with particular interests and causes may focus their giving by setting up this type of fund.



AGENCY FUNDS

Established by nonprofit organizations as an investment strategy for growth. We currently hold agency funds for a variety of organizations including schools, churches, and a wide range of other nonprofit agencies.



SCHOLARSHIP FUNDS

Allows the donor to create a fund to assist area students in continuing their education. Donors can choose to set up a fund to benefit students from a particular high school or post-secondary institution.



WAYS YOU CAN GIVE

Giving to your local community foundation can happen through a number of different giving vehicles and it is important to find the one that works best for you. Consult with your financial advisor or attorney or our team is ready to help you on your philanthropic journey. Visit plannedgiving.communitygiving.org for more information.



CASH

A donation of cash is a simple and easy way for you to make a gift.



APPRECIATED SECURITIES AKA STOCKS & BONDS

Donating appreciated securities such as stocks and bonds is a tax-effective way to make a gift to a charitable fund at CommunityGiving or partner community foundations. The value of the gift is determined by taking the mean between the high and low stock price on the date of the gift.



REAL ESTATE

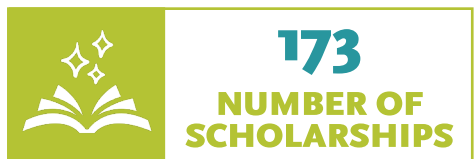
Donating appreciated real estate, such as a home, vacation property, undeveloped land, farmland, or commercial property can be a significant contribution to support causes you care about most through a fund at CommunityGiving or partner community foundations.



RETIREMENT ASSETS

Donating unused retirement assets (IRA, 401(k), etc.) is a good way to make charitable gifts through a fund at CommunityGiving or partner community foundations, as most people do not use all their retirement assets during their lifetime.

STUDENT SCHOLARSHIP SUCCESS



"Scholarships like this allow me to get the best education and relieves the burden of the cost of college. I know I can never thank you enough for this generous gift." – Kaylee J.

Scholarships have become an essential tool for students to achieve their academic dreams and overcome financial barriers. With the increasing cost of education, providing scholarships to area students has become more important than ever before. Providing scholarship opportunities to area students is a vital investment in their future and the community as a whole. We work with donors to establish these funds. Education is the key to success, and scholarships can help unlock that door for students who might not otherwise have the opportunity.

CREATING A LEGACY OF PHILANTHROPY

This past year, we recognized the 25th anniversary of two of our partner community foundations – the Willmar Area Community Foundation (WACF) and the Brainerd Lakes Area Community Foundation (BLACF). The WACF and BLACF go above and beyond, offering concierge level service to their donors, collaborating with nonprofits on significant issues, and engaging with the wider community to create a brighter future for everyone. Community foundations are established for the long term, and we are excited to witness the achievements these communities will accomplish in the next 25 years!

BRAINERD LAKES AREA COMMUNITY FOUNDATION

Founded in 1998, the Brainerd Lakes Area Community Foundation (BLACF) was formed to help make charitable giving easy and provide potential tax benefits. BLACF works to understand and address evolving community needs through engaging people and connecting resources. BLACF is committed to working with community members and donors to ensure the Brainerd Lakes Area continues to thrive even through unforeseen changes in community needs, from a global pandemic to population growth, workforce, daycare, and housing shortages. With over 130 funds, totaling \$18.75 million in fund assets, BLACF, along with our partner funds have helped to provide over \$8.5 million in the past 25 years to support charities who provide critical services to some of our most vulnerable neighbors.



WILLMAR AREA COMMUNITY FOUNDATION

With the mission of “Engaging people, connecting resources and building community” as their north star, the Willmar Area Community Foundation (WACF) has engaged diverse perspectives, connected ideas and acted as a vessel for change and good for the past 25 years.

With a total of \$26.2 million in fund assets and over 160 funds, WACF has given more than \$13.6 million in the past 25 years to charities that provide critical services in our community. In 2023 the WACF brought awareness to housing needs across the county, empowered work to close the Opportunity Gap, supported natural disaster relief in the greater New London area and Raymond, built social trust, fostered welcoming places and launched the emPOWERED Nonprofit Initiative to sustain local partners.





NON-PROFIT ORG.
U.S. POSTAGE
PAID
ST. CLOUD, MN
PERMIT NO 1446

101 7th Avenue South, Suite 100
St. Cloud, MN 56301

320.253.4380 • 877.253.4380
Fax: 320.240.9215

CommunityGiving.org

CFNS

**ACCREDITED
FOUNDATION**

Confirmed in Compliance with
National Standards for U.S.
Community Foundations.



See Your Impact Today!

